

BXW-S Safety brakes - Datasheet

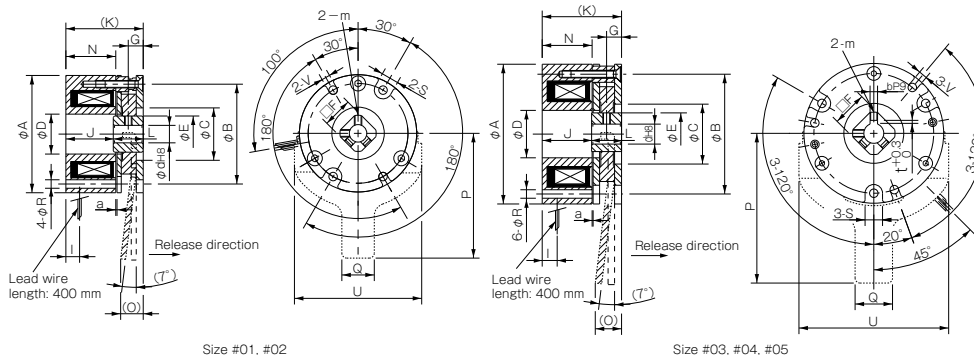
HOLDING USE

Specifications

Model	Size	Static friction torque Ts [N·m]	Coil [at 20 °C]				Heat resistance class	Lead wire		Max. rotation speed [min ⁻¹]	Rotating part moment of inertia J [kg·m ²]	Allowable braking energy rate P _{bael} [W]	Total braking energy E _t [J]	Armature pull-in time t _a [s]	Armature release time t _r [s]	Mass [kg]
			Voltage [V]	Wattage [W]	Current [A]	Resistance [Ω]		UL style	Size							
BXW-01-10S	01	0.36	24	5.0	0.208	115	F	UL3398	AWG26	5000	0.6 × 10 ⁻⁶	—	—	0.025	0.010	0.2
BXW-02-10S BXW-02-12S	02	0.75	24	6.6	0.275	87.3	F	UL3398	AWG26	5000	1.9 × 10 ⁻⁶	—	—	0.030	0.010	0.3
BXW-03-10S BXW-03-12S	03	1.50	24	9.0	0.375	64.0	F	UL3398	AWG26	5000	3.8 × 10 ⁻⁶	—	—	0.035	0.020	0.4
BXW-04-10S BXW-04-12S	04	2.60	24	11.5	0.479	50.1	F	UL3398	AWG22	5000	12.0 × 10 ⁻⁶	—	—	0.040	0.025	0.6
BXW-05-10S BXW-05-12S	05	5.20	24	13.0	0.542	44.3	F	UL3398	AWG22	5000	23.0 × 10 ⁻⁶	—	—	0.045	0.030	0.8

* The armature pull-in time and armature release time are taken during DC switching.

Dimensions

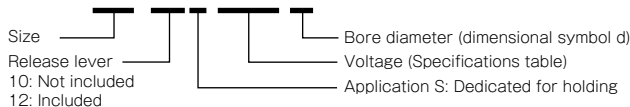


Size	Radial direction dimensions											Axial direction dimensions							Bore dimensions					
	A	B	C	D	E	S	V	R	F	m	O	P	Q	U	G	I	J	K	L	N	a	d	b	t
01	37	32	18	13.5	12.0	6	3	3	10	M3	—	—	—	—	4.5	5.0	22.5	31.5	9	22.5	0.10	5	—	—
02	47	40	21	16.0	14.5	7	3.4	3.4	12	M3	10.2	50	13	51	6.0	5.5	19.2	31.2	12	20.0	0.10	6	—	—
03	56	48	24	19.0	17.0	7	3.4	3.4	14	M3	11.7	60	15	60	6.0	6.0	19.9	31.9	12	20.0	0.15	8	—	—
04	65	58	35	24.0	22.0	7	3.4	3.4	18	M4	12.5	70	15	70	7.0	7.0	19.9	33.9	14	21.0	0.15	10	3	1.2
05	75	66	36	28.0	26.5	9	4.5	4.5	22	M4	14.5	80	20	80	7.0	7.0	22.1	36.1	14	21.5	0.15	12	4	1.5

* There is no release lever option for size #01.

How to Place an Order

BXW-01-10S-24V-5



* Further bore diameters and voltages possible on request.