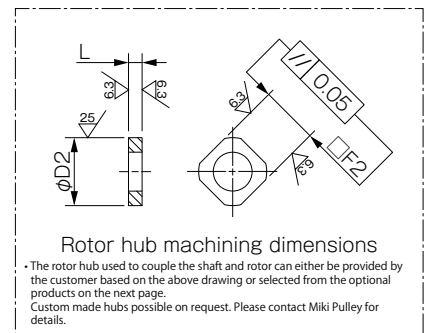
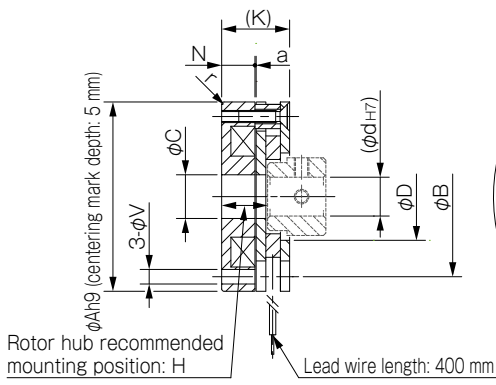


BXR-LE Safety brakes - Datasheet

Specifications (Brake)

Model	Size	Static friction torque T _s [N-m]	Coil [at 20 °C]								Heat resistance class	Lead wire		Max. rotation speed [min ⁻¹]	Rotating part moment of inertia J [kg-m ²]	Allowable braking energy rate E _{ba} [J]	Total braking energy E _r [J]	Armature pull-in time t _a [s]	Armature release time t _r [s]	Mass [kg]
			Overexcitation output				Normal excitation output					UL style	Size							
			Voltage [V]	Wattage [W]	Current [A]	Resistance [Ω]	Voltage [V]	Wattage [W]	Current [A]	Resistance [Ω]										
BXR-015-10LE	015	0.06	24	16.5	0.688	35	7	1.4	0.200	35	F	UL3398	AWG26	6000	3.34 × 10 ⁻⁸	5	1000	0.020	0.020	0.03
BXR-020-10LE	020	0.14	24	16.5	0.688	35	7	1.4	0.200	35	F	UL3398	AWG26	6000	5.56 × 10 ⁻⁸	15	3000	0.035	0.020	0.06
BXR-025-10LE	025	0.32	24	16.5	0.688	35	7	1.4	0.200	35	F	UL3398	AWG26	6000	1.56 × 10 ⁻⁷	15	3000	0.035	0.020	0.08
BXR-035-10LE	035	0.62	24	16.5	0.688	35	7	1.4	0.200	35	F	UL3398	AWG26	6000	4.83 × 10 ⁻⁷	87	17000	0.050	0.020	0.12
BXR-040-10LE	040	1.32	24	16.5	0.688	35	7	1.4	0.200	35	F	UL3398	AWG26	6000	6.32 × 10 ⁻⁷	87	17000	0.060	0.020	0.16
BXR-050-10LE	050	3.20	24	16.5	0.688	35	7	1.4	0.200	35	F	UL3398	AWG26	6000	1.51 × 10 ⁻⁶	200	40000	0.060	0.020	0.40

Dimensions (Brake)



Model	Size	Radial direction dimensions										Axial direction dimensions			Rotor hub machining dimensions			Unit [mm]
		A	r	B	C	D	d max.	□F	S	V	H	K	N	a	L	D2	□F2	
BXR-015-10LE	015	26	R0.5	22	7	12	5	8	4.3	2.3	9.5 ~ 10.0	14.0	7.0	0.1	4 or more	10 ⁰ _{-0.1}	8 ⁰ _{-0.7}	
BXR-020-10LE	020	32	R0.5	28	9	16	8	12	5.0	2.3	9.5 ~ 10.0	14.0	7.0	0.1	4 or more	14 ⁰ _{-0.1}	12 ⁰ _{-0.7}	
BXR-025-10LE	025	39	R0.5	33	9	18	8	12	5.5	3.0	9.5 ~ 10.0	14.0	7.0	0.1	4 or more	14 ⁰ _{-0.1}	12 ⁰ _{-0.7}	
BXR-035-10LE	035	48	R0.5	42	15	28	14	19	5.5	3.0	9.5 ~ 10.0	14.0	7.0	0.1	4 or more	23 ⁰ _{-0.1}	19 ⁰ _{-0.7}	
BXR-040-10LE	040	56	R0.5	50	15	27	14	19	6.5	3.4	9.9 ~ 10.4	14.5	7.4	0.1	4 or more	23 ⁰ _{-0.1}	19 ⁰ _{-0.7}	
BXR-050-10LE	050	71	R0.5	65	22	37	20	25	8.0	4.4	14.0 ~ 14.4	19.0	10.5	0.1	4.5 or more	31 ⁰ _{-0.1}	25 ⁰ _{-0.7}	

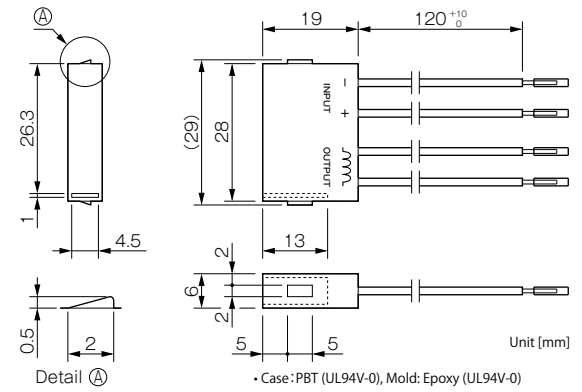


Specifications (Controller)

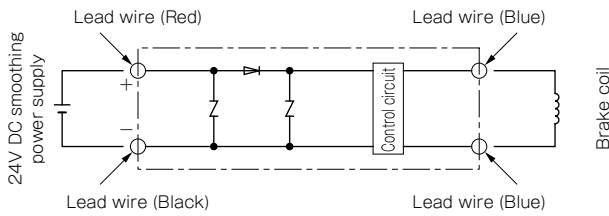
Model	BEM-24ESN7-120N
Input voltage	24V DC \pm 10% smoothing power supply
Output voltage	Initial: 24V DC (0.2 sec.) Constant: 7V DC (\pm 10%), PWM control *When the input voltage is 21V DC, the output voltage is cut off.
Max. output current	1.0 A DC (ambient temp.: 20 °C), 0.8 A DC (ambient temp.: 60 °C)
Insulating resistance	500V DC, 100 M Ω with Megger (input/output – between terminal and case)
Dielectric strength voltage	1000V AC, 50/60 Hz, 1 min. (input/output – between terminal and case)
Ambient environment	-20 to 60 °C, 5 to 95% RH, no condensation/freezing
Mass	0.02 kg

Lead wire	Function	Description	Specification
Red	Input (+)	Connects the 24V DC smoothing power supply (+)	UL3398 AWG26
Black	Input (-)	Connects the 24V DC smoothing power supply (-)	UL3398 AWG27
Blue	Output	Connects the spring-actuated brake (either pole)	UL3398 AWG28
Blue	Output	Connects the spring-actuated brake (either pole)	UL3398 AWG29

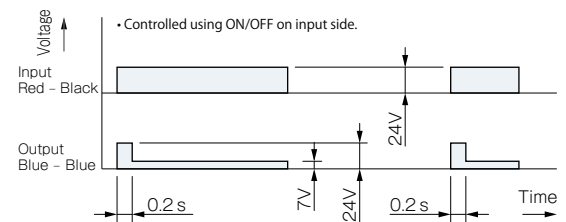
Dimensions (Controller)



Structure (Controller)

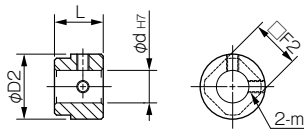


Timing Chart (Controller)



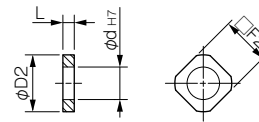
Options Rotor Hub

Set screw type (C)



Model	Size	L	D2	\square F2	m Nominal dia.	d		
						Standard	Min.	Max.
BXR-015-10LE	015	10	10	8 _{-0.07}	M2.5	5	4	5
BXR-020-10LE	020	10	14	12 _{-0.07}	M3	8	5	8
BXR-025-10LE	025	10	16	12 _{-0.07}	M3	8	5	8
BXR-035-10LE	035	12	26	19 _{-0.07}	M4	14	8	14
BXR-040-10LE	040	12	26	19 _{-0.07}	M4	14	11	14
BXR-050-10LE	050	15	35	25 _{-0.07}	M5	20	15	20

Press fit type (P)



Model	Size	L	D2	\square F2	d		
					Standard	Min.	Max.
BXR-015-10LE	015	4	9.58	8 _{-0.07}	5	5	6
BXR-020-10LE	020	4	14	12 _{-0.07}	8	7	8
BXR-025-10LE	025	4	14	12 _{-0.07}	8	7	8
BXR-035-10LE	035	4	23	19 _{-0.07}	14	9	14
BXR-040-10LE	040	4	23	19 _{-0.07}	14	11	14
BXR-050-10LE	050	4.5	31	25 _{-0.07}	20	15	20

How to Place an Order

BXR-015-10LE-006-C5

Size ———
 Controller set type ———
 Nominal static friction torque (3-digit number listed in the specifications tables) ———
 Bore diameter (dimension symbol: d) ———
 Option (Rotor Hub) ———
 Blank: Without rotor hub ———
 C: Set screw type ———
 P: Press fit type ———

MIKI PULLEY EUROPE AG

www.mikipulley.de

Rheinweg 5, CH-8200 Schaffhausen, Tel: +41 52 625 24 24
Bahnhofstraße 12, D-63762 Großostheim, Tel: +49 6026 999 610



ammertech
moving forward

Grasbeemd 21,
5705 DE Helmond, Nederland
Tel. +31 (0)492 594 300,

E-mail: pr@ammertech.nl,
Internet: www.ammertech.nl