

# BXR-10 Safety brakes - Datasheet

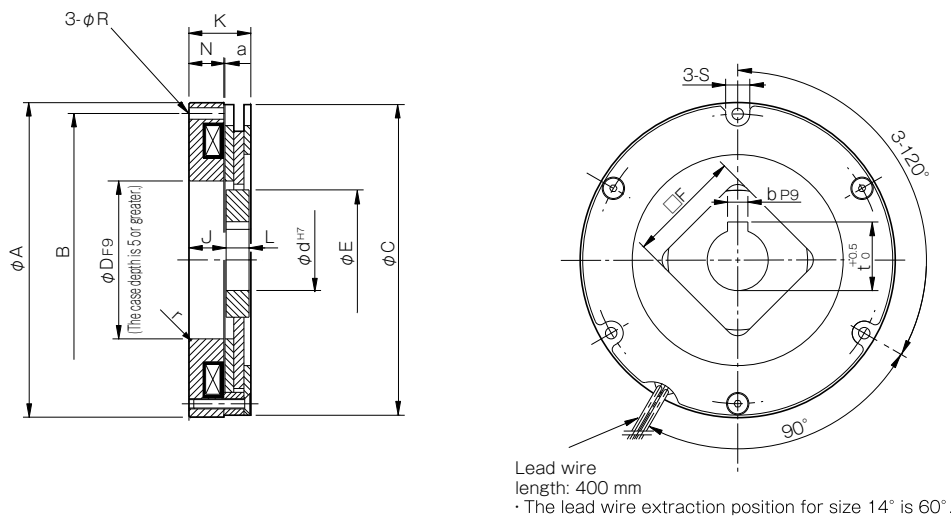
## SQUARE ROTOR HUB

### Specifications

Model	Size	Static friction torque $T_s$ [N·m]	Coil [at 20 °C]				Heat resistance class	Lead wire		Max. rotation speed [min <sup>-1</sup> ]	Rotating part moment of inertia J [kg·m <sup>2</sup> ]	Allowable braking energy rate $E_{ba2}$ [J]	Total braking energy $E_t$ [J]	Armature pull-in time $t_a$ [s]	Armature release time $t_{ar}$ [s]	Backlash [°]	Mass [kg]
			Voltage [V]	Wattage [W]	Current [A]	Resistance [ $\Omega$ ]		UL style	Size								
BXR-06-10-005	06	5	24	17.6	0.73	32.7	F	UL1333	AWG20	5000	$2.35 \times 10^{-5}$	500	$2.0 \times 10^5$	0.050	0.020	1.2	0.9
BXR-08-10-012	08	12	24	19.4	0.81	29.7	F	UL1333	AWG20	5000	$3.45 \times 10^{-5}$	800	$2.0 \times 10^5$	0.080	0.020	1.2	1.2
BXR-10-10-016	10	16	24	21.5	0.90	26.8	F	UL1333	AWG20	5000	$1.12 \times 10^{-4}$	1500	$2.2 \times 10^6$	0.110	0.050	0.9	1.3
BXR-12-10-030	12	30	24	23.7	0.99	24.3	F	UL1333	AWG20	5000	$1.88 \times 10^{-4}$	1500	$2.5 \times 10^6$	0.120	0.030	0.8	2.3
BXR-14-10-038	14	38	24	31.0	1.29	18.6	F	UL1333	AWG20	3600	$4.22 \times 10^{-4}$	1800	$3.0 \times 10^6$	0.120	0.030	0.5	3.0
BXR-16-10-055	16	55	24	19.0	0.79	30.3	F	UL1333	AWG20	3600	$7.10 \times 10^{-4}$	2000	$3.0 \times 10^6$	0.220	0.100	0.5	3.6

• The armature pull-in time and armature release time are taken during DC switching.  
 • Backlash is the value between the rotor and rotor hub.

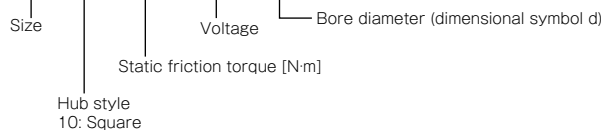
### Dimensions



Size	Radial direction dimensions									Axial direction dimensions					Bore diameter				
	A	B	C	D	r	E	F	R	S	J	L	N	K	a	d	b	t	d max	
06	83.5	76	82	47	R0.5	42	35	4.5	9	17.0	7	14.7	25.0	0.10	20	6	22.5	25	
08	93.5	85	92	49	R0.5	42	35	4.5	10	19.0	7	15.7	27.0	0.10	20	6	22.5	25	
10	123.5	115	122	62	R0.5	55	45	4.5	9.5	14.6	9	13.7	24.3	0.10	24	8	27	28	
12	137.5	130	136	65	R1	62	50	4.5	12	15.4	9	12.5	25.0	0.15	24	8	27	30	
14	167.5	158	166	80	R1	74	60	5.5	12	16.0	9	12.0	25.0	0.15	28	8	31	38	
16	185	175	184	100	R1	86	65	5.5	12.5	21.3	11.5	19.4	32.8	0.20	28	8	31	45	

How to Place an Order

BXR-14-10-038-24V-28DIN



• Further bore diameters possible on request.



**MIKI PULLEY EUROPE AG**

**[www.mikipulley.de](http://www.mikipulley.de)**

Rheinweg 5, CH-8200 Schaffhausen, Tel: +41 52 625 24 24  
Bauhofstraße 12, D-63762 Großostheim, Tel: +49 6026 999 610



**ammertech**  
*moving forward*

Grasbeemd 21,  
5705 DE Helmond, Nederland  
Tel. +31 (0)492 594 300,

E-mail: [pr@ammertech.nl](mailto:pr@ammertech.nl),  
Internet: [www.ammertech.nl](http://www.ammertech.nl)